

Support L214

From grinding up chicks alive and force-feeding ducks to castrating piglets without anaesthesia, animal agriculture involves many objectionable practices. L214 works on behalf of the animals to help reduce their suffering.

L214 draws its strength from the commitment of its members and supporters.

Please help us take action to help animals.

I would like to become a member

- at the benefactor level: €80
- at the regular level: €25
- at the discount level: €12 (financial hardship)

I would like to make a donation of € _____

66% of your membership fee or donation is deductible from your taxes (up to the limit of 20% of your income). For example, if you make a donation of €100, you can deduct €66 from your taxes.

I would like to receive a tax receipt

First name:

Last name:

Address:

Post code:

City:

Country:

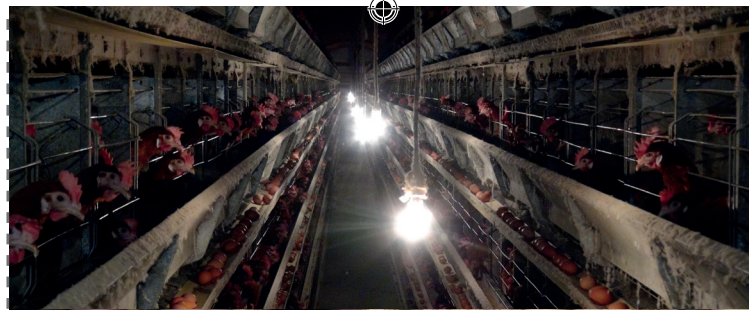
Email:

I would like to subscribe to the electronic newsletter (in French)

Payment by check made out to L214
 Bank card or bank transfer at www.L214.com
 Association L214 - CS20317 - 69363 Lyon 08 Cedex - France
www.L214.com - contact@L214.com

Pursuant to the French Information Technology and Freedom Act of 6 January 1978, you have the right to access, correct and delete information concerning you. This information will not be shared with third parties.

Please do not litter.



Let's open our eyes



we can save their lives



éthique
& animaux



L214

AN ANIMAL RIGHTS ORGANISATION



*“Every animal,
as a sentient being...”*

Art. L214-1 of the French Rural Code

L214.com
viande.info
stopgavage.com
lait-vache.info





Sentient beings

Whether their habitat is on the land or in the sea, animals want to live. Like us, they experience a wide range of sensations and emotions. **Because they are able to suffer and can also appreciate well-being and comfort, animals should have the right to proper living conditions.** "Farm" animals represent 99% of all "domesticated" animals.

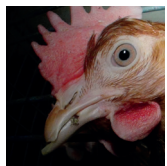
Social and emotional needs



Most farm animals are crowded together by the thousands in enormous sheds. They begin life far from their mothers (chickens and turkeys) or are separated from them very soon after birth (calves at dairy farms and piglets).

By overcrowding them or isolating them in cages, these farms prevent animals from forming their normal emotional bonds and subject them to psychological and physical harm. Many natural behaviours – stretching their wings, scratching at the ground, standing up straight, running and jumping, exploring, playing or spending time alone – are made impossible, especially when the animals are denied access to the outdoors.

Mutilated for cohabitation



From the beginning of their lives, these animals are subjected to mutilations performed without anaesthetic to "adapt" them to the crowded conditions in which they must live. In all of the conventional livestock operations and

most of the organic ones, chickens' beaks are blunted, ducks' claws are removed, pigs' tails and teeth are cut, calves' horns are cauterised and piglets are castrated.

Assembly line slaughter

It is impossible to prevent suffering when thousands of animals are slaughtered in an assembly line set-up. Animals feel fear and pain at the slaughterhouse. What right do we have to take their lives just for the pleasure of eating their flesh?

Every day, our indifference leads to the deaths of millions of animals.

Killed every year in France

700 million
"BROILER" CHICKENS



85 million
DUCKS



60 million
RABBITS



47 million
"LAYING" HENS



25 million
PIGS



6 million
SHEEP AND GOATS



5 million
CATTLE



and billions
OF FISH



Animals feel sensations and emotions. And they want to live.

L214 takes action

At slaughterhouses and on the oceans, billions of animals are killed each year, but for the industry, their suffering counts for little. L214 takes action to defend them. **With targeted campaigns, L214 helps to change their lives.**

Targeted campaigns



We carry out actions aimed at the public, businesses and institutions to promote change in public and commercial policies as well as to encourage new consumer habits. Our arguments are thoroughly informed by field surveys, the study of scientific and professional publications, and the analysis of legislative texts. Our action is part of a solid network of local, national and international organisations. We take every opportunity to discuss the place animals are given in our society.

Revealing what animals experience

L214 films field investigations and sends them to the media for broadcast. We show the realities of livestock-raising operations and slaughter: rabbits and hens kept in battery cages, ducks force-fed on an industrial scale, negligent conditions during transport to slaughterhouses, and the slaughter itself, with or without stunning beforehand.

Responsible consumers

L214 encourages consumers to adopt a responsible attitude in their food purchases, ideally by abstaining from animal products altogether, but at the very least by reducing their use of these products and boycotting products from factory farms.

Another world is possible

L214 works to strengthen animal-protection laws and to raise awareness so that animals will no longer be considered as property that we can use as we please.

**Together,
we can change the lives of animals**



for him



for her



for them

photo credits: L214 except above (Yves Roland/Fotolia, Lilifox/Fotolia) and facing (Nastasia Froloff)

